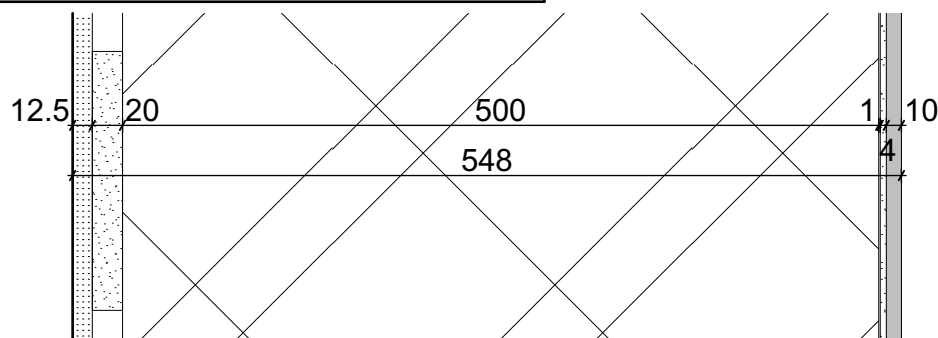


BATHROOM WALL BW1

SC 1:5



COMPOSITION OF BATHROOM WALL HELUZ 50

N	FUNCTION	MATERIAL SPECIFICATION	STABILIZATION	THICKNESS
1	PAINT	ONE-COMPONENT, WATER-SOLUBLE PAINT DESIGNED FOR GYPSUM BOARDS internal dispersion paint with organic binders and limestone fillers, water vapour permeability 0.02 m	brush or spraying machine	-
2	FILLER	UNIVERSAL PASTE FILLER bending strength > 320N, fire reaction class A2-s1,d0	stainless steel trowel	-
3	GYPSUM BOARD	GYPSUM BOARD coefficient of thermal conductivity λ_u 0.21W/m*K, fire reaction class A2-s1,d0, diffusion resistance factor μ 6-10, longitudinal expansion factor in case of humidity change $5-8 \cdot 10^{-6}$, compressive strength 5.0 - 10.0 MPa	mechanically anchored	12.5
4	ADHESIVE BINDER	GYPSUM ADHESIVE BINDER adhesion min. 0.24 MPa, fire reaction class A1, curing time min. 12 hours	stainless steel trowel	20
5	PENETRATION	CONCENTRATED WATERDISPERSION concentrated aqueous dispersions of artificial resins based on acrylic resins with additives, consumption 100g/m ² , dilution ratio 1:4, curing time circa 24 hours	roller, brush or spraying machine	-
6	LOAD-BEARING	LOAD-BEARING MASONRY BRICK monolayer load-bearing brick, heat transfer coefficient U 0.11W/m ² *K, thermal resistance R 9.16 m ² *K/W, coefficient of thermal conductivity λ_u 0.058W/m*K, fire reaction class B-s1,d0, fire resistance REI 30 DP1/90 DP3, airborne noise Rw 44(-1,-2), diffusion resistance factor μ 9.71	-	500
7	PENETRATION	ACRYLIC PRIMER ready to use acrylic based primer, temperature range (+5°C)-(+35°C), minimum drying time 45-60 minutes, pot life 20 minutes, consumption 150 gr/m ² , 2 layers needed	roller, brush or spraying machine	-
8	WATERPROOFING	ACRYLIC EMULSION BASED, ONE COMPONENT ELASTIC WATERPROOFING curing time 4 hours, consumption 1.5 kg/m ² , 3 layers, tensile strength ≥ 0.8 N/mm ² , tensile adhesion strength ≥ 0.8 N/mm ² , water-vapour permeability class I, equivalent air thickness $S_d < 5$	brush or roller	1.0
9	TILE ADHESIVE	CEMENTITIOUS ADHESIVE WITH EXTENDED OPEN TIME AND REDUCED SLIP curing time 24 hours, consumption 3-5 kg/m ² , 4 mm in case of 30x30cm tiles, tensile adhesion strength ≥ 1.0 N/mm ² , fire reaction class A1, slip >0.5 N/mm ²	stainless steel trowel	4.0
10	SURFACE FINISH	CERAMIC TILES dimensions 30 x 30 cm, coefficient of thermal conductivity λ_u 1.01W/m*K, diffusion resistance factor $\mu > 0.5$, anti-slip R11	-	10
11	GROUTING MORTAR	FLEXIBLE GROUTING MORTAR curing time 24 hours, flexural strength ≥ 2.5 N/mm ² , compressive strength ≥ 15 N/mm ²	rubber trowel	-

NOTES:

- 4 distance od mortar targets 30 - 35 cm
- 5, 7 painted on clean, flat (maximal deviation 30 mm), dry, degreased surface in temperatures higher than 5 degrees
- 9 corners have to be treated by butyl tape, width 100 mm before placing of the adhesive